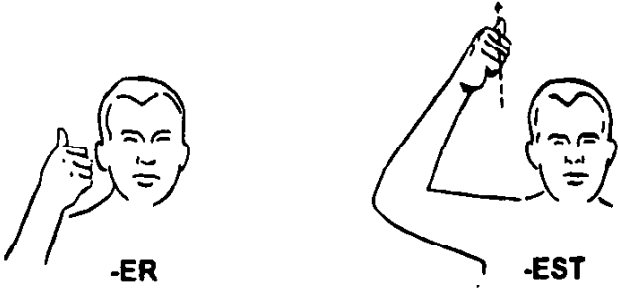


# Superlatives, Ordinal Numbers, & Body/Gaze Shifting

A **Superlative** means something of the highest order, quality, or degree. Superlatives are used to show something of a greater degree or amount. In English, this is often done by adding the suffix **-er** and **-est**. Similarly, in ASL, a modified "A" is placed by the signers cheek for "er" and slightly higher for "est."



## SUPERLATIVE EXAMPLE:



**GOOD**



**BETTER**



**BEST**

\* **NOTE:** Not ALL signs are able to take on superlatives. This is also true in English. In those cases, one should sign "MORE" or "MOST." For example, MATURE cannot be used for maturer or maturest. One would say "more mature" or "most mature." The same applies in ASL.

## Ordinal Numbers

**Ordinal Numbers** are numbers that show order. Examples are first, second, third, fourth, and so on. Ordinal numbers (from 1-9) are signed by twisting the hand inward as show below. PLEASE NOTE that ordinal numbers (from 1-9 can also mean that amount in dollars. Ordinal numbers from 10 on are signed by first signing the number and then signing "T H."

## ORDINAL NUMBER EXMAPLES:



**First  
or  
\$ 1.00**



**Third  
or  
\$ 3.00**



**Seventh  
or  
\$ 7.00**

## Body/Gaze Shifting

**Body/Gaze shifting** is also known as role playing. This is done in order to personalize ASL. You literally become the person you are signing about. It's used in order to say what the person said with the same expressions and body language. It is also very useful when signing a conversation between two people. Shifting your body/gaze will help the person see who said what.

There are a few techniques to master body/gaze shifting. These will come naturally as you practice this technique.

Shifting to the left or right is the general way a role is taken on. This movement can be done by:

- turning your shoulders and head to the right or left
- turning your head alone to the right or left
- turning the whole body to the right or left
- gazing to the right or left

This technique is used best when comparing, telling a story, and interpreting situations.

### EXAMPLES OF BODY/GAZE SHIFTING:

1. I LOOK (left) POLICE IX. POLICE SAY (shift right) YOU TROUBLE.

2. (shift right) I SHOCK WHEN I SAW HIM right-COME-to-me.

3. (shift right) I TELL MY DOG "IF SIT, I FEED YOU." (shift left) DISOBEY

4. I LAY GROUND (tilt up) WHEN AUNT COME-to-me SAY (tilt down) "GRASS WET, GET UP."

5. Conversation:

MOM say (shift left) "YOU NEED BUY ME CAR"

(shift right) DAD SAY "CAR REALLY EXPENSIVE"

(shift left) "BUT I REALLY NEED"

(shift right) "DONT CARE"

(shift left) TAKE OUR GUN.

(shift right) OK WHICH WANT WHICH ?