

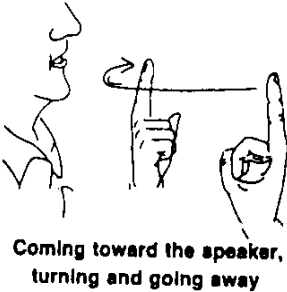
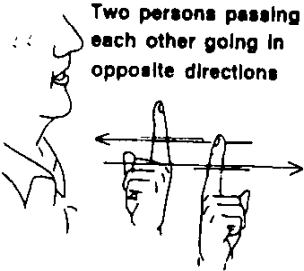
Classifiers and Size & Shape Specifiers

Classifier: handshapes used to indicate location and movement. They generally represent objects that have already been identified.

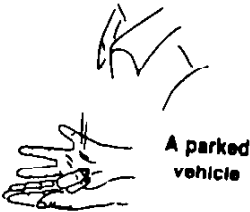
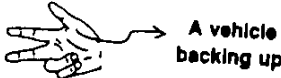
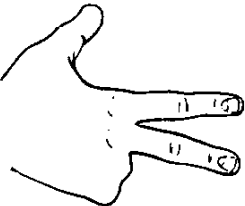
Size & Shape Specifiers: handshapes used to show size, shape, amount, height, texture, and also location.



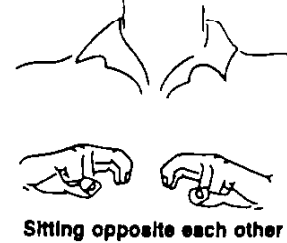
CL: 1 - a person.



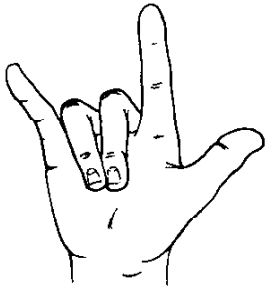
CL: 3 - any land or water vehicle.



CL: bent V - an animal, a person, or an object with legs.



CL: ILY - a winged aircraft.



A bumpy flight

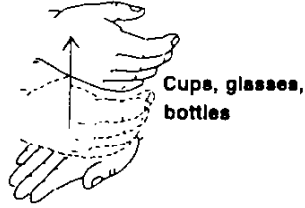


Aircraft taking off



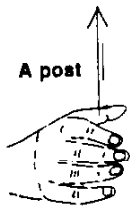
Aircraft circling

CL: C - glasses, cups, bottles, cans.

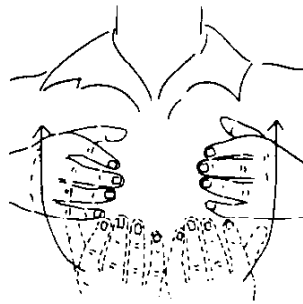
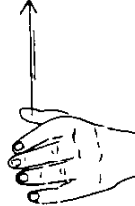


Cups, glasses, bottles

CL: both C - ex: bowls, poles, columns.

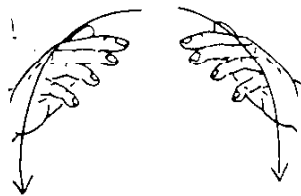


A post



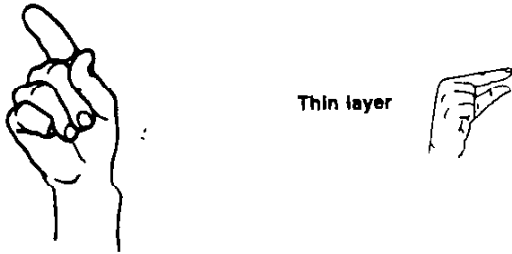
Bowl

CL: bent 5 - cluster, pile, heap.

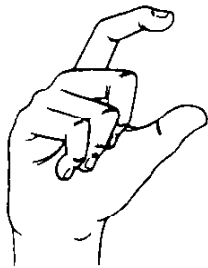


A large heap or pile

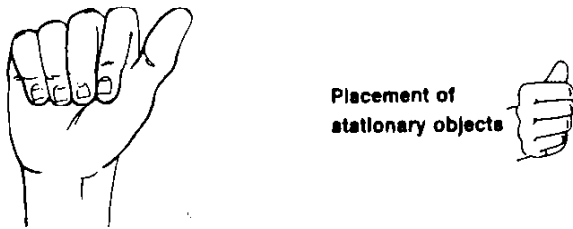
CL: g - something that is thin layer, small width, or small amount.



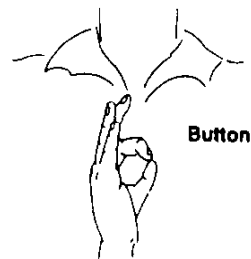
CL: modified C - show thickness; small, round, flat object.



CL: modified A - a stationary object

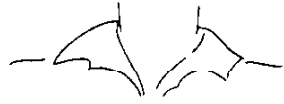


CL: f - small, round, flat object or area.

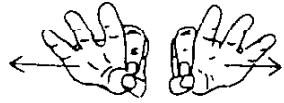


CL: both f's - long, round, objects; tubes

Long thin objects



← diploma



CL: B - flat object or area



A flat surface



A dip (In the opposite direction, a hump)