





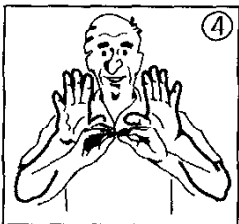



7 WEATHER

ALPHABET PUZZLE


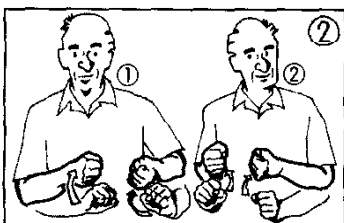




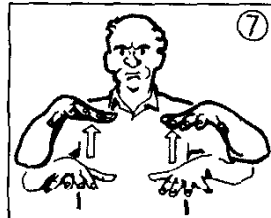

To solve the puzzle, either fill in the blanks with the correct definition or decode the Manual Alphabet key. **Answers on page 138.**

	 -----		 -----
	 -----		 -----

MATCH PUZZLE

Match the pairs of words that belong together.

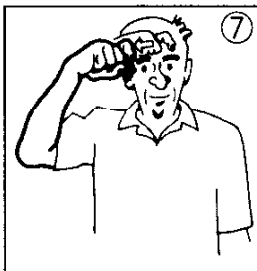
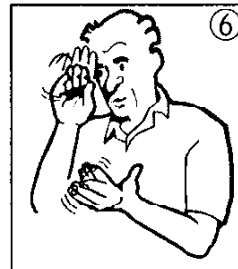
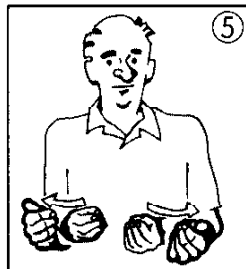
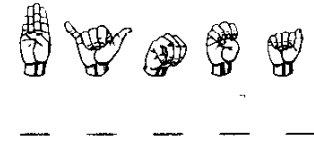
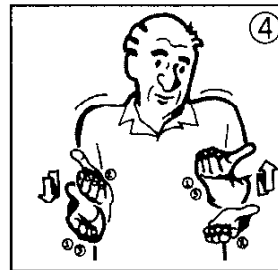
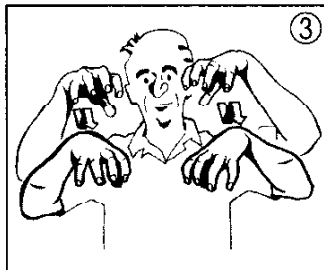
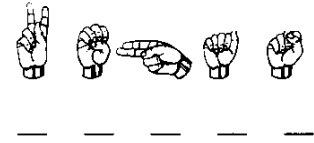
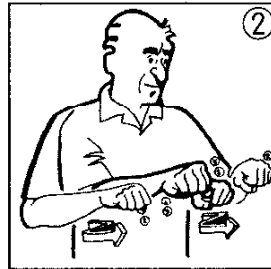
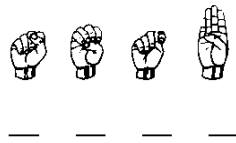
Answers on page 138.

SCRAMBLE PUZZLE

To solve the puzzle, either fill in the blanks with the correct definition or decode the Manual Alphabet key, then unscramble the letters to spell the correct definition.

Answers on page 138.



DEFINITION PUZZLE

To solve the puzzle, pick the correct word definition. **Answers on page 138.**



- ①
- A. Morning
 - B. Afternoon
 - C. Night



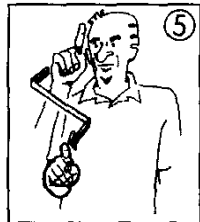
- ②
- A. Show
 - B. Slow
 - C. Grow



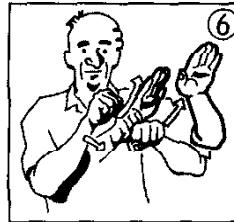
- ③
- A. Sunset
 - B. Sunrise
 - C. Sunday



- ④
- A. Before
 - B. During
 - C. After



- ⑤
- A. Lightning
 - B. Lighting
 - C. Lighter



- ⑥
- A. Launch
 - B. Ramp
 - C. Mountain



- ⑦
- A. Last
 - B. Past
 - C. Fast



- ⑧
- A. Require
 - B. Have
 - C. Sell



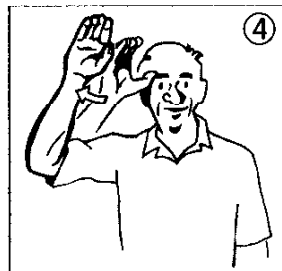
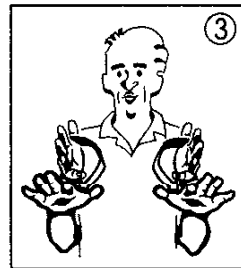
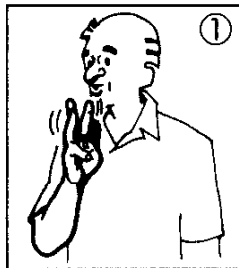
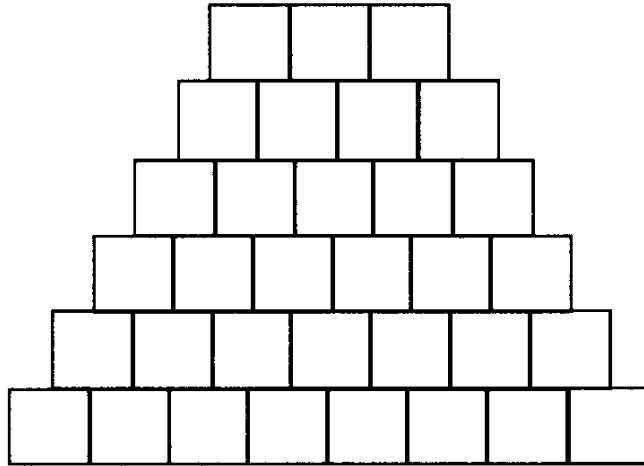
- ⑨
- A. Yesterday
 - B. Today
 - C. Tomorrow



- ⑩
- A. Rubber
 - B. Runner
 - C. Rudder

PYRAMID PUZZLE

Solve the word definitions, then fill in the blanks in the pyramid. The signs are grouped in no particular order and the words do not add up to make a sentence.
Answers on page 139.



SEARCH PUZZLE

To complete the puzzle, solve the word definitions, then search for words in the grid. Definitions are spelled out vertically, horizontally, diagonally, forward, or backward. **Answers on page 139.**

The puzzle consists of 12 numbered illustrations of a man signing, each representing a word definition. The illustrations are arranged in three columns and four rows:

- Row 1: 1. Man with hands in front of chest; 2. Man with hand to face; 3. Man with hands in front of chest; 4. Man with hands holding a small object; 5. Man with hands in front of chest.
- Row 2: 6. Man with hand to chest; 7. Man with hand to face; 8. Man with hand to face; 9. Man with hand to face; 10. Man with hands in front of chest.
- Row 3: 11. Man with hand to face; 12. Man with hand to face.

The search grid is a 20x20 grid of hand signs. The signs are arranged in a pattern that spells out the words "SEARCH PUZZLE" vertically, horizontally, diagonally, forward, or backward. The grid contains 20 rows and 20 columns of hand signs.

PHRASE PUZZLE

Choose words from the vocabulary list, then put them in the correct order to form the ASL phrases below. **Answers on page 139.**



PHRASES

- A. It's beautiful today.
- B. It was cold this morning.
- C. It will freeze tonight.
- D. It rained yesterday.
- E. I lost my umbrella.
- F. The sun is hot.

CROSSWORD PUZZLE

Solve the word definitions, then fill in the numbered blanks in the grid.

ACROSS

DOWN

