


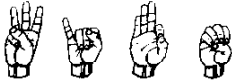
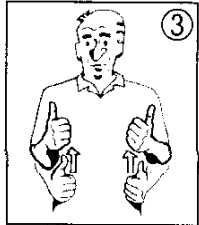





# 5 GETTING ACQUAINTED

## ALPHABET PUZZLE



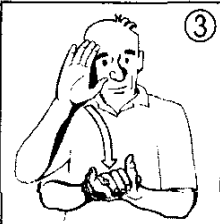

To solve the puzzle, either fill in the blanks with the correct definition or decode the Manual Alphabet key. **Answers on page 134.**

	 _ _ _ _ _		 _ _ _ _
	 _ _ _ _		 _ _ _ _ _

## MATCH PUZZLE

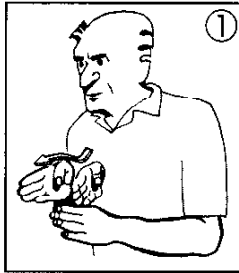
Match the pairs of words that belong together.

**Answers on page 134.**

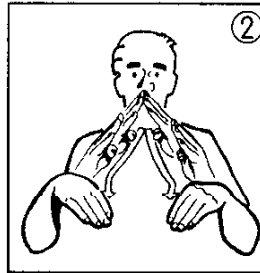
			
			

# SCRAMBLE PUZZLE

To solve the puzzle, either fill in the blanks with the correct definition or decode the Manual Alphabet key, then unscramble the letters to spell the correct definition.  
**Answers on page 134.**



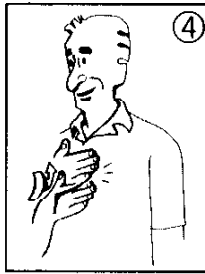
-----



-----



-----



-----



-----



-----



-----



-----

## DEFINITION PUZZLE

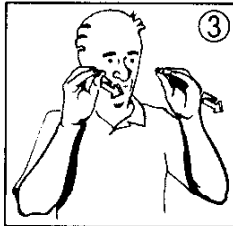
To solve the puzzle, pick the correct word definition. **Answers on page 134.**



- A. Friend
- B. Fend
- C. Fired



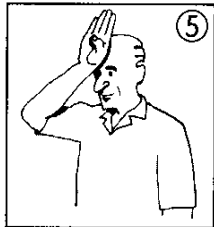
- A. Bold
- B. Cold
- C. Old



- A. Reach
- B. Each
- C. Teach



- A. Name
- B. Game
- C. Same



- A. Policeman
- B. Firefighter
- C. Soldier



- A. Aft
- B. Art
- C. Act



- A. Have
- B. Heave
- C. Heavy



- A. Law
- B. Low
- C. Allow



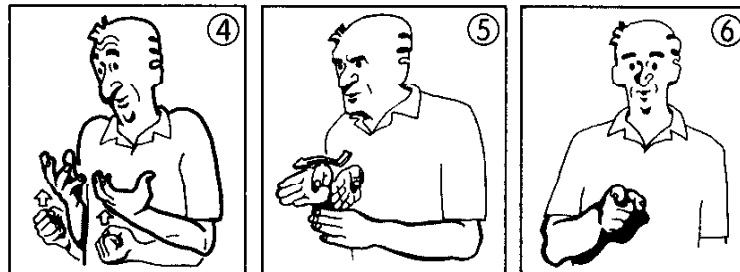
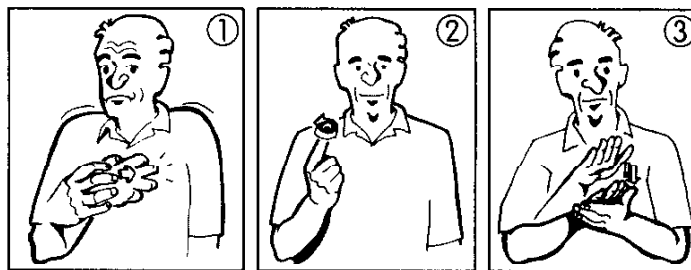
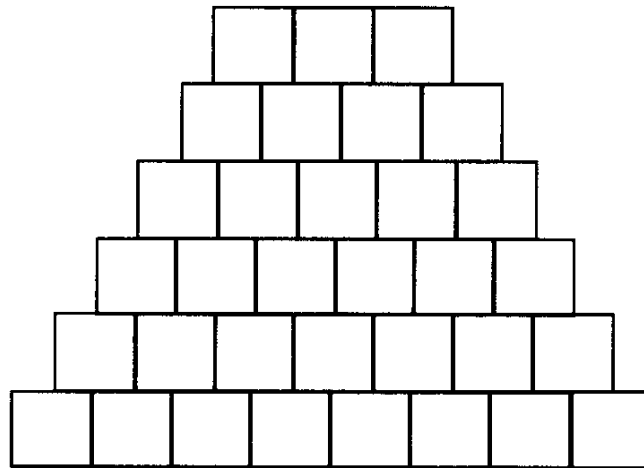
- A. Interfere
- B. Introduce
- C. Interpret



- A. Parent
- B. Daughter
- C. Son

# PYRAMID PUZZLE

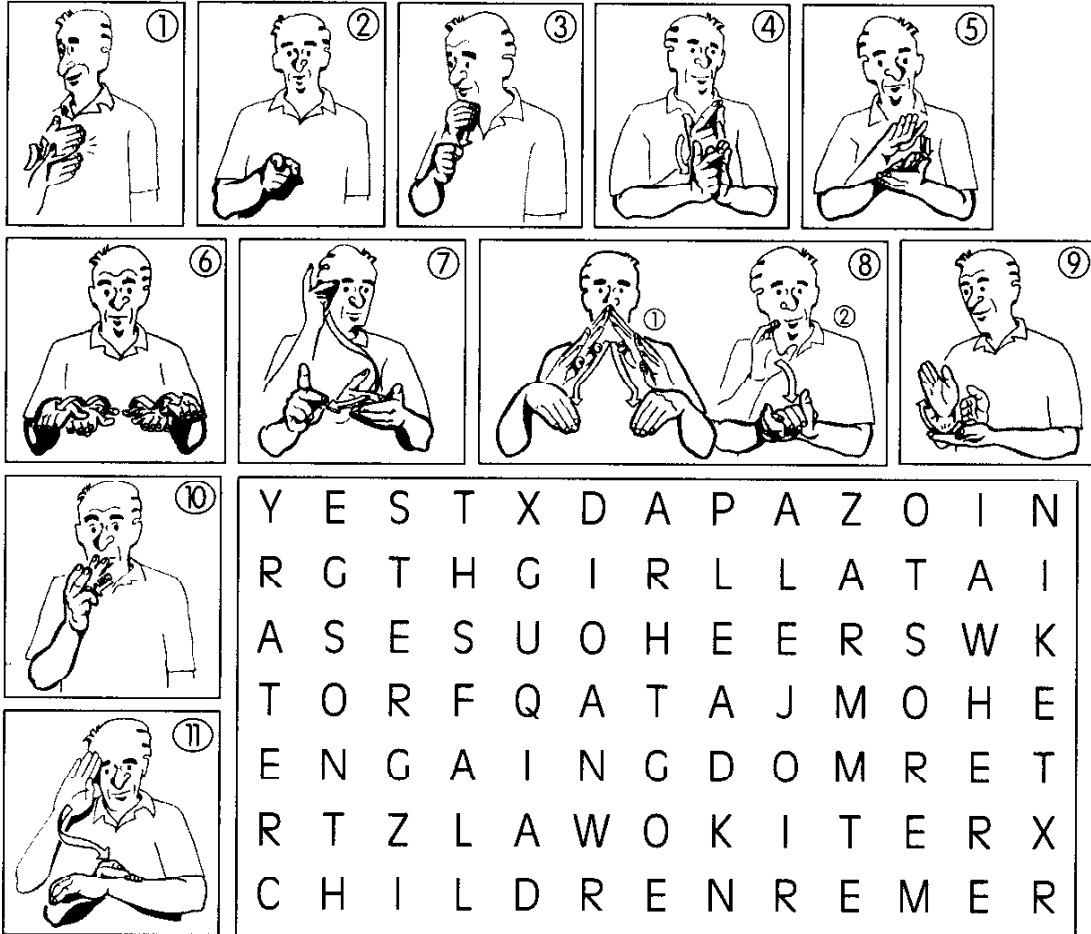
Solve the word definitions, then fill in the blanks in the pyramid. The signs are grouped in no particular order and the words do not add up to make a sentence.  
*Answers on page 135.*



# SEARCH PUZZLE

To complete the puzzle, solve the word definitions, then search for words in the grid. Definitions are spelled out vertically, horizontally, diagonally, forward, or backward.

**Answers on page 135.**



Y	E	S	T	X	D	A	P	A	Z	O	I	N
R	G	T	H	G	I	R	L	L	A	T	A	I
A	S	E	S	U	O	H	E	E	R	S	W	K
T	O	R	F	Q	A	T	A	J	M	O	H	E
E	N	G	A	I	N	G	D	O	M	R	E	T
R	T	Z	L	A	W	O	K	I	T	E	R	X
C	H	I	L	D	R	E	N	R	E	M	E	R
E	H	B	H	O	R	D	S	Q	K	A	D	E
S	A	R	T	B	O	O	H	U	L	L	G	E
F	P	A	X	N	T	H	A	N	O	K	I	M
U	P	U	Q	U	K	T	C	H	D	H	I	T
A	Y	O	U	O	X	E	T	S	O	T	A	D
B	Y	T	N	Z	E	K	O	O	M	E	G	K

# PHRASE PUZZLE

Choose words from the vocabulary list, then put them in the correct order to form the ASL phrases below. **Answers on page 135.**



## PHRASES

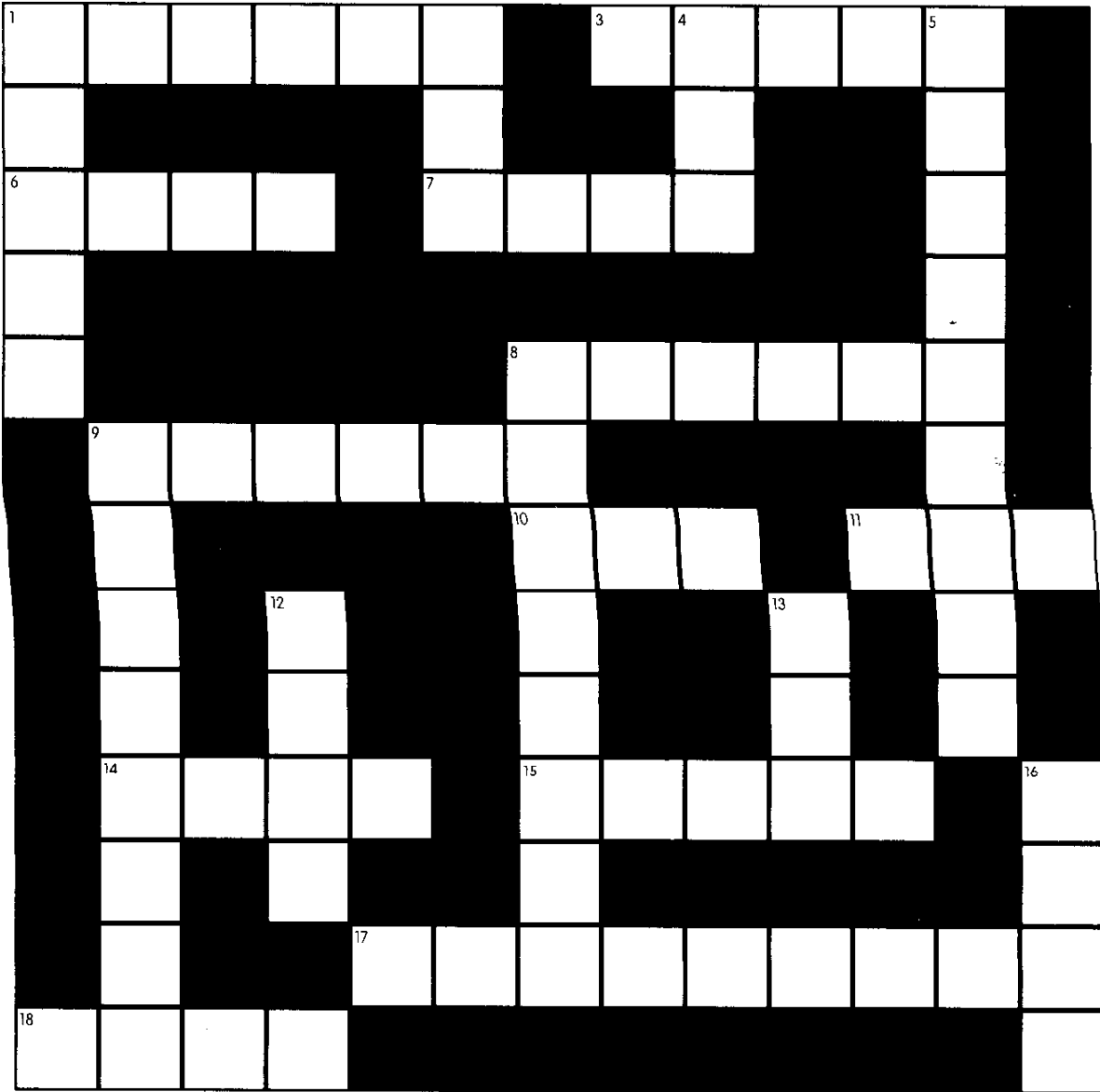
- A. Where are you from?
- B. Where do you live?
- C. Where do you work?
- D. What kind of work do you do?
- E. How many children do you have?
- F. Smoking is not allowed.

# CROSSWORD PUZZLE

Solve the word definitions, then fill in the numbered blanks in the grid.  
**Answers on page 135.**

**ACROSS**

**DOWN**



7300