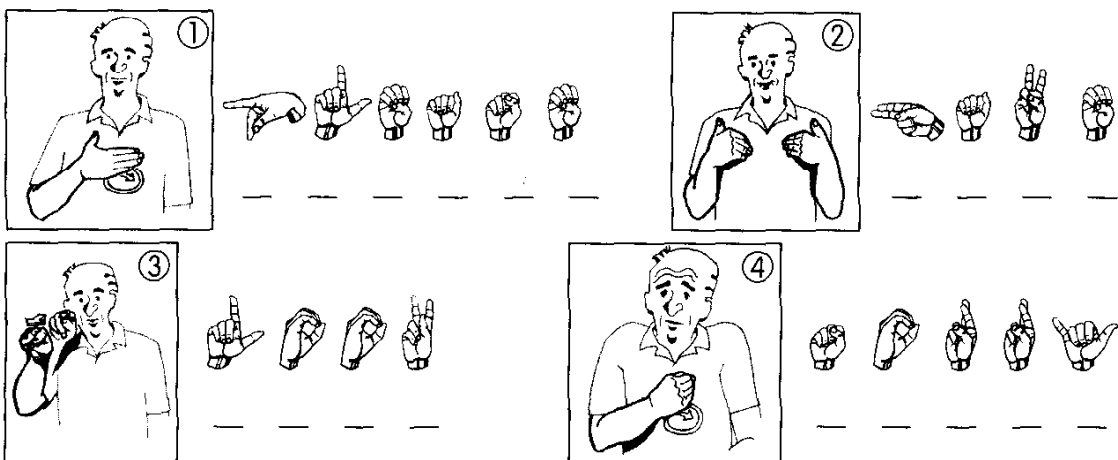


# 3 EVERYDAY EXPRESSIONS

## ALPHABET PUZZLE

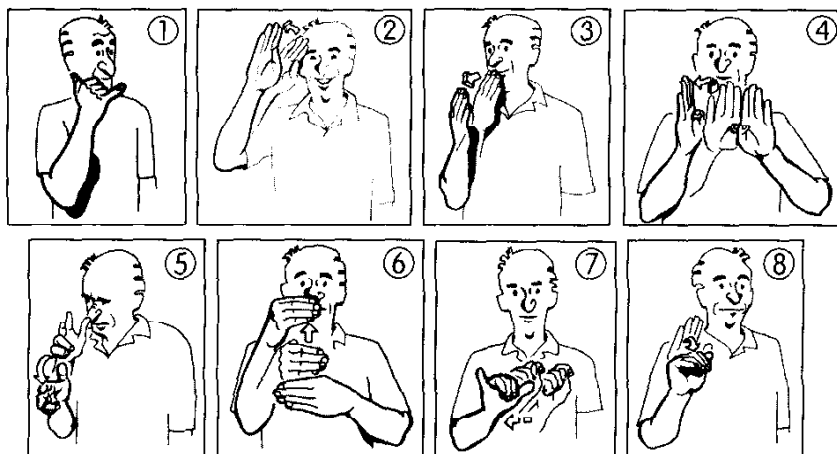
To solve the puzzle, either fill in the blanks with the correct definition or decode the Manual Alphabet key. **Answers on page 130.**



## MATCH PUZZLE

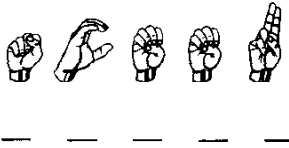
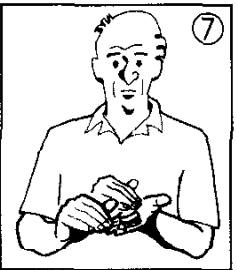
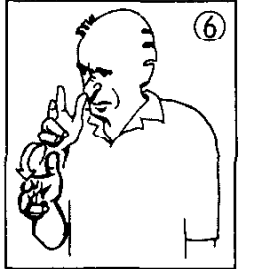
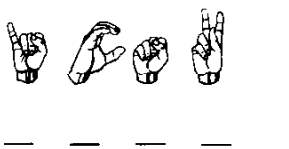
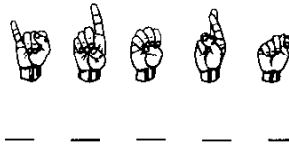
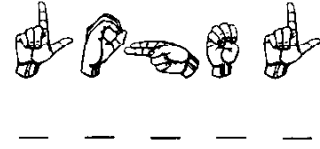
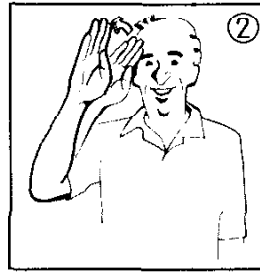
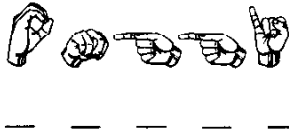
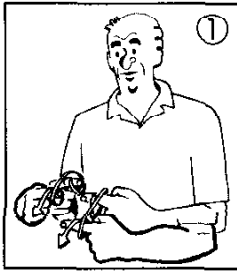
Match the pairs of signs that belong together.

**Answers on page 130.**



# SCRAMBLE PUZZLE

To solve the puzzle, either fill in the blanks with the correct definition or decode the Manual Alphabet key, then unscramble the letters to spell the correct definition.  
**Answers on page 130.**



# DEFINITION PUZZLE

To solve the puzzle, pick the correct sign definition. **Answers on page 130.**



- A. To
- B. For
- C. With



- A. Sooner
- B. Later
- C. Now



- A. A lot
- B. Some
- C. None



- A. Number
- B. Letter
- C. Symbol



- A. Fine
- B. Mine
- C. Combine



- A. Know
- B. Think
- C. Feel



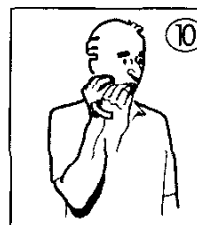
- A. Tried
- B. Tiered
- C. Tired



- A. Truck
- B. Car
- C. Bus



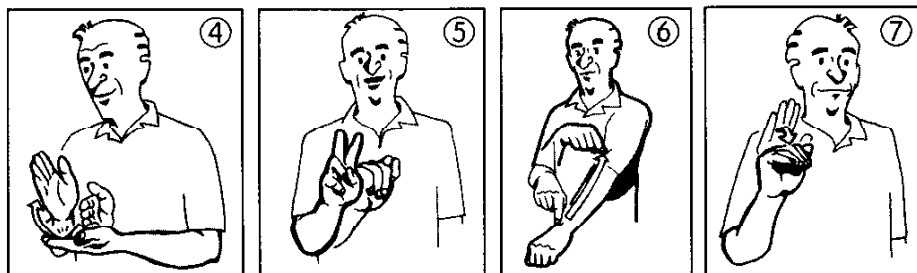
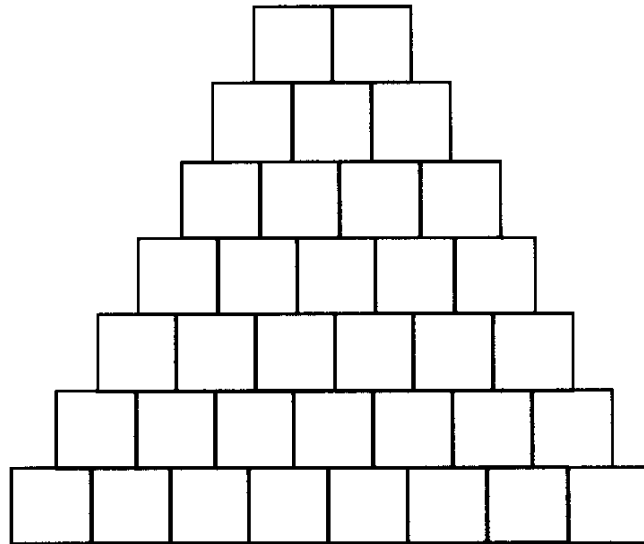
- A. Sick
- B. Trick
- C. Thick



- A. Health
- B. Head
- C. Home

# PYRAMID PUZZLE

Solve the sign definitions, then fill in the blanks in the pyramid. The signs are grouped in no particular order and the words do not add up to make a sentence.  
**Answers on page 131.**



# SEARCH PUZZLE

To complete the puzzle, solve the sign definitions, then search for its corresponding English equivalent in the grid. Definitions are spelled out vertically, horizontally, diagonally, forward, or backward. **Answers on page 131.**



Z	A	K	U	X	E	T	O	R	Y	L	E	J
A	W	U	Z	Y	J	W	L	U	M	O	Z	O
H	G	A	D	B	O	W	I	P	E	Q	U	K
Y	E	L	N	O	N	H	K	T	K	I	D	O
E	P	O	Y	T	J	E	E	I	E	R	M	U
F	I	P	S	W	I	R	R	L	P	O	P	Q
W	O	U	A	F	T	E	R	N	O	O	N	U
U	M	R	R	H	E	B	K	O	N	D	I	R
X	I	K	O	B	Z	Y	L	W	D	E	X	L
O	J	R	T	T	I	R	R	A	Y	S	E	K
Z	L	A	L	U	F	R	E	D	N	O	W	E
A	H	R	W	N	I	X	N	Y	E	L	O	Y
W	O	D	N	I	W	E	S	O	L	C	N	E

# PHRASE PUZZLE

Choose signs from the vocabulary list, then put them in the correct order to form the ASL phrases below. **Answers on page 131.**



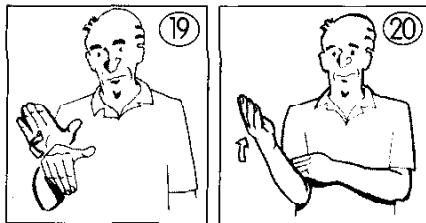
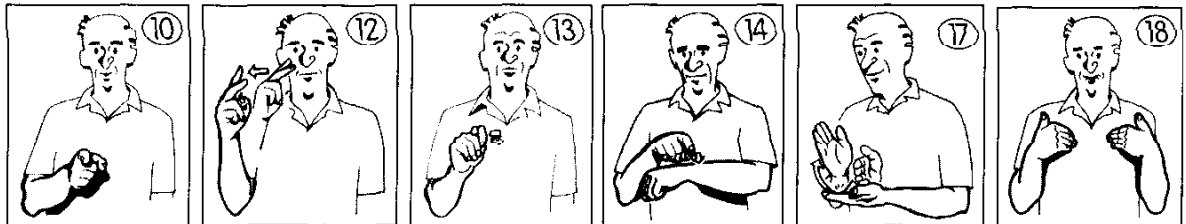
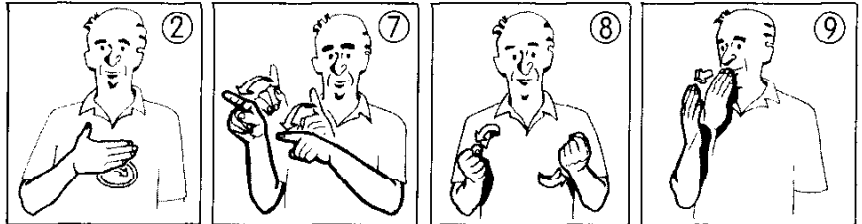
## PHRASES

- A. How have you been?
- B. What's your phone number?
- C. I have to go home.
- D. How are you?
- E. No, thank you.
- F. Do you have a car?

# CROSSWORD PUZZLE

Solve the sign definitions, then fill in the numbered blanks in the grid.  
**Answers on page 131.**

ACROSS



DOWN

